

KEY

STANDARD ON ASB POOL
 STANDARD ON ASB ROOF
 STANDARD ON ASB WALL
 STANDARD ON ASB FLOOR
 STANDARD ON ASB CEILING
 STANDARD ON ASB PARTITION
 STANDARD ON ASB DOOR
 STANDARD ON ASB WINDOW
 STANDARD ON ASB SHUTTER
 STANDARD ON ASB SHUTTER
 STANDARD ON ASB SHUTTER
 STANDARD ON ASB SHUTTER

STABLE
 COLORED YELLOW AND FRAME
 RED BRICK
 BLUE BRICK
 BROWN BRICK
 GREEN BRICK
 GRAY BRICK
 WHITE BRICK
 CONCRETE
 ASPHALT
 GRAVEL
 SAND
 CLAY
 LIME
 GYPSUM
 PLASTER
 STUCCO
 TERRAZZO
 MARBLE
 GRANITE
 SLATE
 SHALE
 SANDSTONE
 LIMESTONE
 GNEISS
 QUARTZITE
 METAMORPHIC
 Igneous
 Sedimentary
 Metamorphic

INDICATE RELATIVE HEIGHTS
 FIRE STATION AS SHOWN BY MAP
 ALTERNATE STREET NUMBERS ARE ACTUAL
 CONSECUTIVE STREET NUMBERS ARE ACTUAL

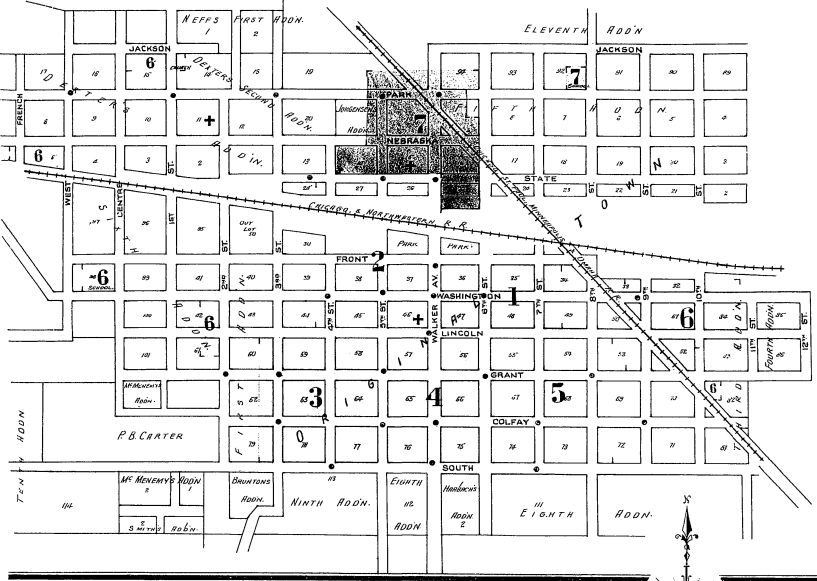
WATER FACILITIES
 Capacity existing water from 3 wells 100' x 6' 2' Reservoirs elevated 20' above town
 capacity 2,500,000 gals. - One Fairbanks Morse Duplex FF size 10 x 5 1/2 x 15
 capacity 2 million gals per 24 hours - One Smith tank duplex FF size 10 x 5 1/2 x 15
 capacity 2,000,000 gals. per 24 hours - One Smith tank duplex FF size 10 x 5 1/2 x 15
 capacity 2,000,000 gals. per 24 hours - One Smith tank duplex FF size 10 x 5 1/2 x 15
 capacity 2,000,000 gals. per 24 hours - One Smith tank duplex FF size 10 x 5 1/2 x 15

FIRE DEPT.
 Volunteer - Company with total of 50 men - 2000 feet 2' hose
 One 4 1/2" truck - Fire alarm bell in whistle on light plant also telephone
 Streets - No fire limits -
 Streets not paved - Public lights electric -

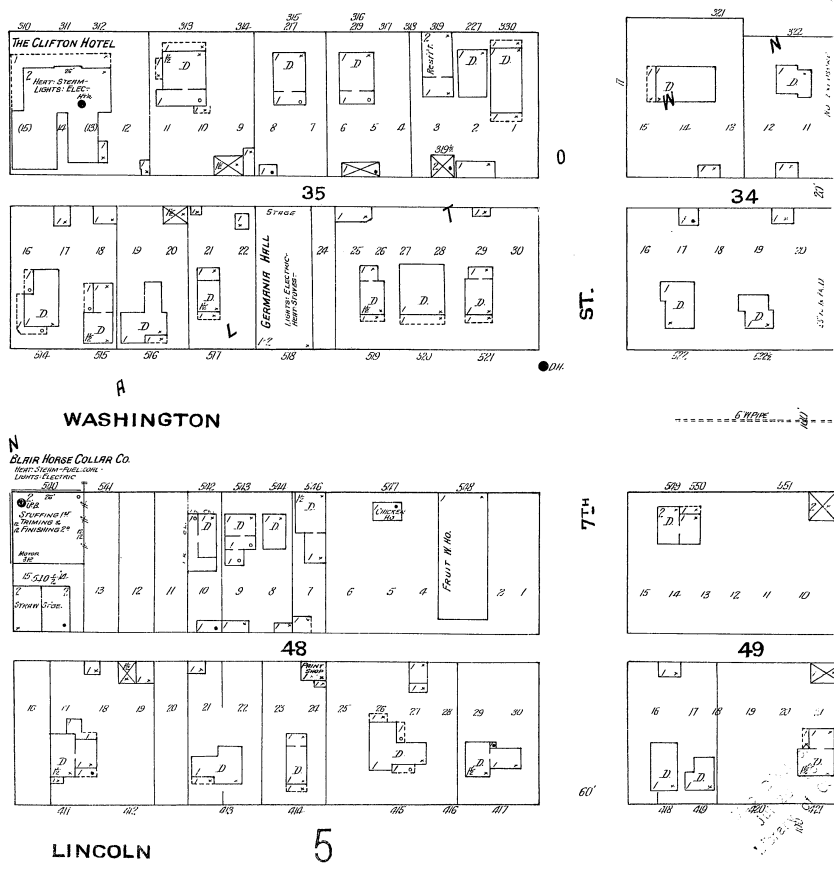
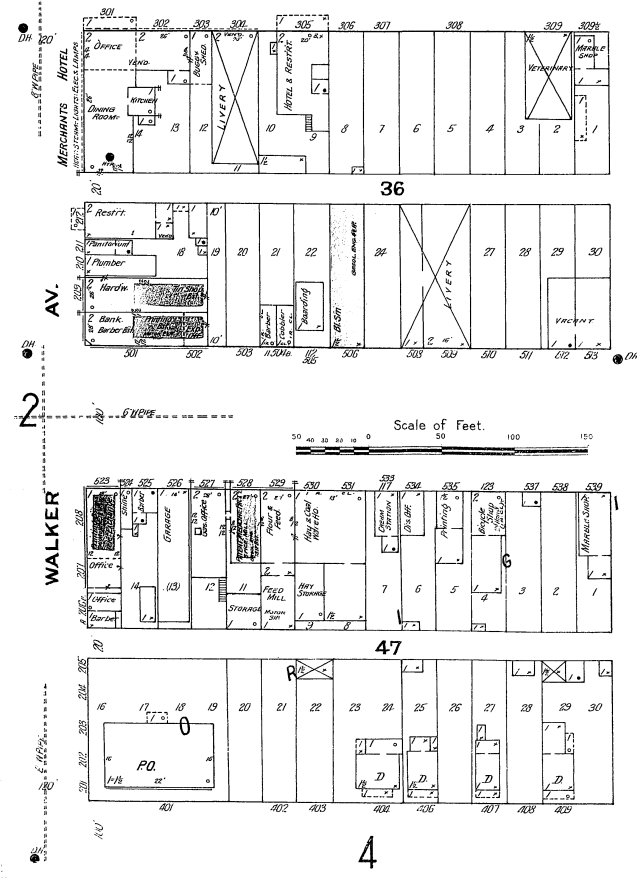


INDEX.

STREETS.	NEBRASKA.	FRENCH TO WEST
Centre	201-212, arbitrary	1-30
Colfax	215-218, "	1-34
"	219-221, "	201-223
"	1301-1357, "	1-30
W.	1401-1425, "	1-30
"	200-211	1-30
Eighth	E	1-30
"	1300-1312, "	1-30
"	1501-1505, "	1-30
Fifth	F	1-30
"	1-22, arbitrary	1-30
"	South to Lincoln	1-30
Fourth	F	1-30
"	100-105, arbitrary	1-30
Front	F	1-30
"	201-257, arbitrary	1-30
"	301-319, "	1-30
"	330-332, "	1-30
Grant	G	1-30
"	501-508, arbitrary	1-30
"	601-618, "	1-30
"	699-704, "	1-30
"	705-707, "	1-30
"	708-715, "	1-30
"	716-724, "	1-30
"	100-105, arbitrary	1-30
"	200-205, "	1-30
W.	300-301	1-30
Jackson	J	1-30
"	301-382, arbitrary	1-30
"	401-401, "	1-30
"	700-735, "	1-30
"	801-804, "	1-30
"	887-905, "	1-30
"	906-924, "	1-30
"	near Second	1-30
"	101-113, "	1-30
"	201-301, "	1-30
"	300-309, "	1-30
W.	2-306, "	1-30
"	201-329, "	1-30
Nebraska	302-319, arbitrary	1-30



FRONT



Scale of Feet.
 0 20 40 60 80 100 120 140 160

WASHINGTON

BLAIR HORSE COLLAR CO.
 Near Steam-Pipe Co.
 Lights Electric.